

PROJECT NAME: _____ CAT. #: _____
 NOTES: _____ FIXTURE SCHEDULE: _____

Linear Class I Division II Emergency

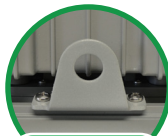
HL-LI Series



2FT



4FT
(WITH YOKE BRACKET)



Second
Retention
Point

Product Description:

The HL-LI SERIES is a linear LED luminaire engineered to stand up to the toughest operating conditions in Class I Division 2 environments such as petroleum refineries and grain processing facilities. A slim and lightweight profile and variety of mounting options enable this long-lasting, high-performance fixture to address virtually any lighting need in harsh and hazardous locations.

Classifications and Ratings:

- Class I, Division 2, Groups A,B,C,D
- Class II, Division 1, Groups E, F, G
- Class III, Division 1
- 1000 hours Spray Testing
- IK08
- IP66
- FCC

Electrical:

- 120-277V
- Power Factor: >0.90

Construction:

- Die cast AA6063 aluminum housing
- Stainless steel hardware
- Polyester powder coat finish
- Polycarbonate lens

Mounting Options:

- Ceiling Mount
- 3/4" NPT Pendant Mount
- Pipe Mount
- Second Retention point standard (Order the safety cable separately)

Ordering Information

FAMILY	-	SUB FAMILY	LENGTH	NOMINAL WATTAGE	VOLTAGE	DISTRIBUTION	CCT	OPTIONS
HL= Hazloc		LI= Linear	24= 24"	40= 40W	U= 120-277V	BLANK= Wide, transparent lens	BLANK= 5000K 40'= 4000K 30'= 3000K	EM0= Battery Backup, 0° C
			48= 48"	80= 80W				

*Made to order

Stocked Items

MODEL NUMBER	ORDER CODE
HL-LI2440UEM0	108257
HL-LI4880UEM0	108260

Accessories

MODEL NUMBER	ORDER CODE	DESCRIPTION	IMAGE
HLLITB	103015	HL-LI LINEAR TRUNION BRACKET, CEILING/WALL MOUNT	
HLLISC	106063	HL-LI LINEAR SAFETY CABLE, 3FT LONG, FOR SECOND RETENTION POINT BRACKET	



5-year standard warranty (further details available at www.maxlite.com/warranties)

Product may be eligible for a warranty extension to 10 years, for an additional fee. Contact MaxLite for details.

Phone: 1-800-555-5629

Fax: 973-244-7333

Web: www.maxlite.com

E-mail: info@maxlite.com

PLM# 677

Rev: 10/04/21

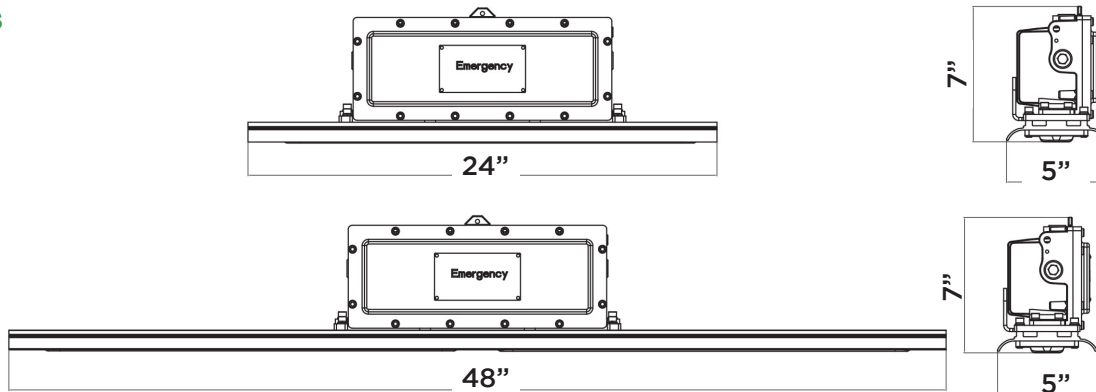
Linear Class I Division II Emergency

HL-LI Series

Specifications

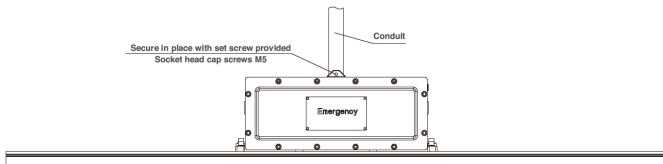
	HL-LI2440	HL-LI4880	EM Mode
Input Power (W)	40	80	12
Lumens Delivered (lm)	5480	10960	2200
Efficacy (lm/W)	137	137	183
CRI	≥70		
Color Temperature	3000K, 4000K, 5000K		
L70 Lifetime (hrs)	≥54,000		
Input Voltage	120-277V		
Power Factor	≥0.9		
Housing	Die cast AA6063 aluminum		
Operating Temperature	32°F - 122°F (0°C - 50°C)		
Temperature Mode	CID2: T4A, CIID1: T6	CID2: T4, CIID1: T6	
Certification	UL 924, UL 844, UL1598, FCC		
Environment	IP66		
Material Usage	RoHS compliant; no mercury		
Warranty	5 years		

Dimensions

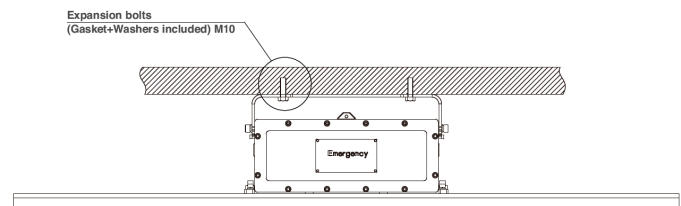


Mounting Options

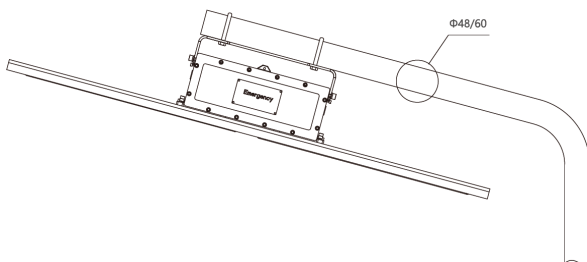
*Comes standard as a Pendant Mount configuration. Yoke bracket is sold as an accessory.
For other variations, mounting hardware is not provided by MaxLite.



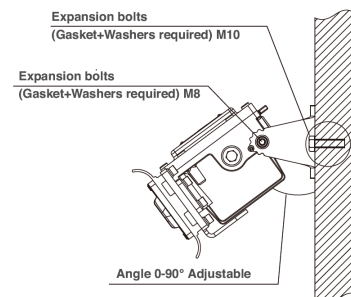
Pendant Mount



Ceiling Mount



Stanchion Mount



Wall Mount